



Chadsmead Primary Academy

Welcome to Reception

2025-2026

Key People

Designated Safeguarding Leads



Mrs Grainger
Headteacher



Mr Stevens
Assistant
Headteacher



Mr Budge
Assistant
Headteacher



Mrs Cadman
SENDCo

Key People



Mrs Crossley
Reception Class Teacher
Early Years Leader



Mrs Pearson
Nursery Nurse

Early Years Curriculum

The Early Years Foundation Stage (EYFS) is the stage of education for children from birth to the end of the Reception year.

It is based on the recognition that children learn best through play and active learning.

We are already doing this in Nursery, so in Reception, we are building on the children's learning.

Early Years Curriculum

The focus for the first half term is on the Prime areas.

Prime Area of Learning & Development

- Communication and Language
- Physical Development
- Personal, Social and Emotional Development

Specific Areas of learning & Development

- Literacy
- Mathematics
- Understanding the World
- Expressive Arts and Design

Characteristics of Effective Learning

These describe behaviours children use in order to learn.

Playing & Exploring (Engagement)

Finding out and exploring, Playing with what they know, Being willing to 'have a go'

Active Learning (Motivation)

Being involved and concentrating, keep trying, enjoying achieving what they set out to do

Creative & Critical Thinking (Thinking)

Having own ideas, Making links, Working with ideas

Exploring Elephant



I am an explorer

Go for it Gorilla



I will have a go

Creative Chameleon



I have my own ideas

Persevering Parrot



I keep trying

Analysing Alligator



I can work things out

Proud Peacock



I am proud of what I do

Reflecting Rhino



I reflect on my progress

Concentrating Crocodile



I join in and concentrate

Slinkly - Linky Snake



I can make links

Choosing Chimp



I choose ways to do things

A Typical Day

**Children will be collected/dropped off
Acorn Classroom Door**

Day Starts: 8:50am

Collection: 3:20pm

Please remember drop off/pick up are busy times. **This is not the time to share important messages** – please use the MyEd app or book an appointment with the office.

A Typical Day

(EYFS- Reception) Acorn Class - Mrs Crossley

2024/25 Timetable

Start of the school day: **8:40am** KS1 Hall Door

End of the school day: **3:10pm** KS1 Hall Door

Monday	Independent Tasks/Handwriting/ Dough Disco	Jigsaw Continuous Provision	Writing Input/ Adult led Activity Continuous Provision	Phonics	Poetry	Maths Meeting	Brilliant Brushers	Understanding the World/ Expressive Arts and Design Input/ Adult led Activity Continuous Provision	Physical Education	Collective Worship
		Children come to school wearing their PE uniform						Children come to school wearing their PE uniform		
Tuesday	Independent Tasks/Handwriting / Dough Disco	Maths Input/ Adult led Activity Continuous Provision	Writing Input/ Adult led Activity Continuous Provision	Phonics	Poetry	Maths Meeting	Brilliant Brushers	Understanding the World/ Expressive Arts and Design Input/ Adult led Activity Continuous Provision		Storytime/ Singing
Wednesday	Independent Tasks/Handwriting/ Dough Disco	Writing Input/ Adult led Activity Continuous Provision		Phonics	Poetry	Collective Worship	LUNCH	Brilliant Brushers	Understanding the World/ Expressive Arts and Design Input/ Adult led Activity Continuous Provision	
Thursday	Independent Tasks/Handwriting/ Dough Disco	Maths Input/ Adult led Activity Continuous Provision	Writing Input/ Adult led Activity Continuous Provision	Phonics	Poetry	Collective Worship		Brilliant Brushers	Forest	
Friday	Independent Tasks/Handwriting/ Dough Disco	Brilliant Brushers	Maths Input/ Adult led Activity Continuous Provision	Writing Input/ Adult led Activity Continuous Provision	Phonics	Poetry		Collective Worship	Continuous Provision	Library
						Storytime				Music/ Singing

8:50am

Door opens. Children complete independent tasks.

Register, children choose their lunch.

Dough Disco (Handwriting)

9:00am

Teacher Input (Maths or Literacy)

Choosing Time (including child-led & adult-led learning)

10:45am

Poetry Basket

11:00am

Phonics – Read Write Inc.

12:00pm

Maths Meeting

12:20pm

Lunch and play

1:20pm

Register

1:30pm

Teacher Input

Choosing Time (including child-led & adult-led learning)

2:45pm

Collective worship and story time

3:20pm

Home time

Developing roots to grow and wings to fly



A Typical Day

Outdoor Provision

In both the morning and afternoon sessions, children will learn outside – come rain or shine!

Children 'free flow' between learning areas.

Outdoor learning promotes physical development.

A Typical Day



**Learning in Reception
is not always clean!**

**Please be
understanding.**

Forest Day

Children will have a weekly forest session
(day will be confirmed in September)

This develops confidence and self esteem through hands on learning in our woodland area.

Please provide your child with:

- Wellies
- Forest Clothing e.g. an all-in-one suit or waterproof clothing

PLEASE LABEL ALL ITEMS CLEARLY

These will be kept in school



Phonics



- Children progress in phonic knowledge across the RWInc. Programme.
- Children are assessed and split into groups throughout Early years and KS1. They have a daily phonics session.
- They learn sounds in a systematic way. These sets of sounds can be found in the reading diary. You will be invited to a phonics workshop in the Autumn Term.
- Children will initially bring home blending books and then a reading book – ‘book bag books’.
- Books that are bought home are matched to their ability. These are decodable, containing sounds and words they can read. We want children to be successful.
- Why do we re-read books?
 - 1 – Accuracy: read the words correctly
 - 2 – Fluency: familiar with the words to read quickly
 - 3 – Comprehension: understand what is being read

Children also choose a story book.
Please share this at home, alongside any other favourite books your child might have.

Mathematics Mastery



<https://www.chadsmeadacademy.co.uk/web/mathematics/525540>

+

+

+

+

+

+

+

+

+

+

+

+

+

+

+

+

+

+

+

+

+

+

+

+

+

+

+

+

+

+

+

+

+

+

+

+

+

+

+

+

+

+

+

+

+

+

+

+

+

+

+

+

+

+

+

+

+

+

+

+

+

+

+

+

+

+

+

+

+

+

+

+

+

+

+

+

+

+

+

+

+

+

+

+

+

+

+

+

+

+

+

+

+

+

+

+

+

+

+

+

+

+

+

+

+

+

+

+

+

+

+

+

+

+

+

+

+

+

+

+

+

+

+

+

+

+

+

+

+

+

+

+

+

+

+

+

+

+

+

+

+

+

+

+

+

+

+

+

+

+

+

+

+

+

+

+

+

+

+

+

+

+

+

+

+

+

+

+

+

+

+

+

+

+

+

+

+

+

+

+

+

+

+

+

+

+

+

+

+

+

+

+

+

+

+

+

+

+

+

+

+

+

+

+

+

+

+

+

+

+

+

+

+

+

+

+

+

+

+

+

+

+

+

+

+

+

+

+

+

+

+

+

+

+

+

+

+

+

+

+

+

+

+

+

+

+

+

+

+

+

+

+

+

+

+

+

+

+

+

+

+

+

+

+

+

+

+

+

+

+

+

+

+

+

+

+

+

+

+

+

+

+

+

+

+

+

+

+

+

+

+

+

+

+

+

+

+

+

+

+

+

+

+

+

+

+

+

+

+

+

+

+

+

+

+

+

+

+

+

+

+

+

+

+

+

+

+

+

+

+

+

+

+

+

+

+

+

+

+

+

+

+

+

+

+

+

+

+

+

+

+

+

+

+

+

+

+

+

+

+

+

+

+

+

+

+

+

+

+

+

+

+

+

+

+

+

+

+

+

+

+

+

+

+

+

+

+

+

+

+

+

+

+

+

+

+

+

+

+

+

+

+

+

+

+

+

+

+

+

+

+

+

+

+

+

+

+

+

+

+

+

+

+

+

+

+

+

+

+

+

+

+

+

+

+

+

+

+

+

+

+

+

+

+

+

+

+

+

+

+

+

+

+

+

+

+

+

+

+

+

+

+

+

+

+

+

+

+

+

+

+

+

+

+

+

+

+

+

+

+

+

+

+

+

+

+

+

+

+

+

+

+

+

+

+

+

+

+

+

+

+

+

+

+

+

+

+

+

+

+

+

+

+

+

+

+

+

+

+

+

+

+

+

+

+

+

+

+

+

+

+

+

+

+

+

+

+

+

+

+

+

+

+

+

+

+

+

+

+

+

+

+

+

+

+

+

+

+

+

+

+

+

+

+

+

+

+

+

+

+

+

+

+

+

+

+

+

+

+

+

+

+

+

+

+

+

+

+

+

+

+

+

+

+

+

+

+

+

+

+

+

+

+

+

+

+

+

+

+

+

+

+

+

+

+

+

+

+

+

+

+

+

+

+

+

+

+

+

+

+

+

+

+

+

+

+

+

+

+

+

+

+

+

+

+

+

+

+

+

+

+

+

+

+

+

+

+

+

+

+

+

+

+

+

+

+

+

+

+

+

+

+

+

+

+

+

+

+

+

+

+

+

+

+

+

+

+

+

+

+

+

+

+

+

+

+

+

+

+

+

+

+

+

+

+

+

+

+

+

+

+

+

+

+

+

+

+

+

+

+

+

+

+

+

+

+

+

+

+

+

+

+

+

+

+

+

+

+

+

+

+

+

+

+

+

+

+

+

+

+

+

+

+

+

+

+

+

+

+

+

+

+

+

+

+

+

+

+

+

+

+

+

+

+

+

+

+

+

+

+

+

+

+

+

+

+

+

+

+

+

+

+

+

+

+

+

+

+

+

+

+

+

+

+

+

+

+

+

+

+

+

+

+

+

+

+

+

+

+

+

+

+

+

+

+

+

+

+

+

+

+

+

+

+

+

+

+

+

+

+

+

+

+

+

+

+

+

+

+

+

+

+

+

+

+

+

+

+

+

+

+

+

+

+

+

+

+

+

+

+

+

+

+

+

+

+

+

+

+

+

+

+

+

+

+

+

+

+

+

+

+

+

+

+

+

+

+

+

+

+

+

+

+

+

+

+

+

+

+

+

+

+

+

+

+

+

+

+

+

+

+

+

+

+

+

+

+

+

+

+

+

+

+

+

+

+

+

+

+

+

+

+

+

+

+

+

+

+

+

+

+

+

+

+

+

+

+

+

+

+

+

+

+

+

+

+

+

+

+

+

+

+

+

+

+

+

+

+

+

+

+

+

+

+

+

+

+

+

+

+

+

+

+

+

+

+

+

+

+

+

+

+

+

+

+

+

+

+

+

+

+

+

+

+

+

+

+

+

+

+

+

+

+

+

+

+

+

+

+

+

+

+

+

+

+

+

+

+

+

+

+

+

+

+

+

+

+

+

+

+

+

+

+

+

+

+

+

+

+

+

+

+

+

+

+

+

+

+

+

+

+

+

+

+

+

+

+

+

+

+

+

+

+

+

+

+

+

+

+

+

+

+

+

+

+

+

+

+

+

+

+

+

+

+

+

+

+

+

+

+

+

+

+

+

+

+

+

+

+

+

+

+

+

+

+

+

+

+

+

+

+

+

+

+

+

+

+

+

+

+

+

+

+

+

+

+

+

+

+

+

+

+

+

+

+

+

+

+

+

+

+

+

+

+

+

+

+

+

+

+

+

+

+

+

+

+

+

+

+

+

+

+

+

+

+

+

+

+

+

+

+

+

+

+

+

+

+

+

+

+

+

+

+

+

+

+

+

+

+

+

+

+

+

+

+

+

+

+

+

+

+

+

+

+

+

+

+

+

+

+

+

+

+

+

+

+

+

+

+

+

+

+

+

+

+

+

+

+

+

+

+

+

+

+

+

+

+

+

+

+

+

+

+

+

+

+

+

+

+

+

+

+

+

+

+

+

+

+

+

+

+

+

+

+

+

+

+

+

+

+

+

+

+

+

+

+

+

+

+

+

+

+

+

+

+

+

+

+

+

+

- Deepen understanding of key mathematical concepts
- Greater emphasis on problem solving and encouraging mathematical thinking
- Systematic approach to mathematical language
- Frequent use of objects and pictures to represent mathematical concepts
- Concrete – Pictorial - Abstract

Autumn Term Learning

Unit	OVERVIEW
Who helps me in my community?	We will learn about the roles of the emergency services within our wider community. We will learn about safer strangers and how to stay safe by the road.
What happens in Autumn?	We will find out about the natural changes that happen during autumn, including how the weather changes, why trees lose their leaves and how wild animals prepare for the cold weather coming in winter.
Is it strong enough?	We will be looking at different types of houses that people can live in here in the UK, comparing them to houses around the world. We will be investigating to see which materials are best to make our own house.
How do we survive in the cold?	We will be exploring the changes from Autumn to Winter in the UK and will find out how animals prepare for the Winter. We will name animals that live in a polar habitat and how they have adapted to be able to survive.

*All our up-to-date curriculum information is available on our website:
https://www.chadsmeadacademy.co.uk/chadsmead_curriculum*

As we start each unit, you will be sent home with a knowledge organiser. This provide activities and ideas so you can support your child at home.

Home Learning

https://www.chadsmeadacademy.co.uk/home_learning/



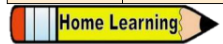
Reading – Everyday


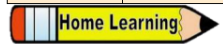
Maths & English – matches the current learning.
Purple homework book. Fortnightly swap.

Creative – offers an opportunity to research and freely present information. It may include, Art, DT, Geography, History or Science. Half Termly.

Chadsmead Primary Academy – Reception Home Learning

These are the expectations for the home learning.

 Reading	Each child has an orange folder containing either a Read Write Inc. 'blending' or 'book bag' book. This must be returned every Friday so that it can be changed. Please ensure that you read with your child daily to help support their reading. In the reading diary you will see a sound recognition section, use this as a tool to support your child with recognising their sounds at home. All children can take home a class library book on a Monday. These are changed weekly.
Maths	Maths and English homework will be alternated weekly. Homework will be set on a Thursday and should be returned the following Tuesday. Maths homework will be consolidation of what we have already learned in class or it may be practice for a particular maths skill. Maths homework will be linked to number, shape, space and measure. Homework should be completed in the purple homework book. 
English	English and Maths homework will be alternated weekly. Homework will be set on a Thursday and should be returned the following Tuesday. English homework will be a consolidation of what we have been learning during that week. It is really important that your child is sat at a table with the correct posture and ensure that they are holding their pencil correctly using a tripod grip when writing. Homework should be completed in the purple homework book.
Creative	Each holiday, pupils will receive more creative homework, based on the new mini unit that we will be learning. This may be an art or DT piece of work for you and your child to complete together. This is given at the start the break and returned to school two weeks into the new half term. 



Home
Learning
starts in
Autumn 2.

Developing roots to grow and wings to fly



Snack

Snack is provided as free choice, where children choose when they would like to have it.

Children sign for their snack.

**PLEASE PROVIDE A LABELLED
WATER BOTTLE DAILY**

Early years children are given free milk and fruit.

We encourage the children to try the variety of fruit and vegetables that are provided.

Lunch

PLEASE CONTINUE TO PROVIDE A LABELLED
WATER BOTTLE DAILY

Children will eat their dinner in the dining room.

Your child receives Infant Free Schools Meals

We encourage you to take this option.

Menus are available on the website.

Dietary requirements are catered for.

*Should your child bring
their own lunch, we ask
that you do not pack items
that contain peanuts.*

School Uniform

- Black 'school type' trousers, shorts, skirt, skort or pinafore dress
- White polo shirt (logo not required)
- Chadsmead sweatshirt or V-necked cardigan with school logo
- Black school shoes (flat sole/low heels, not trainers or boots)
- Black/White socks/tights
- Blue check only dresses (Optional-Summer term only)
- Plain blue/black hair band if required
- Children should have an outdoor coat

UNIFORMS
— Plus —

PE: *(Will be told which day in September)*

- Black shorts (optional with school logo)
- Chadsmead T-Shirt (either gold or light blue)
- Black pumps or trainers
- Plain Tracksuit (optional school logo)

Forest: *(Will be told which day in September)*

- Wellies
- Forest Clothing e.g. an all in one suit or waterproof clothing



**ALL ITEMS MUST BE LABELLED WITH YOUR
CHILDS NAME**

No name means we are unlikely to find it and/or return it to the correct child.

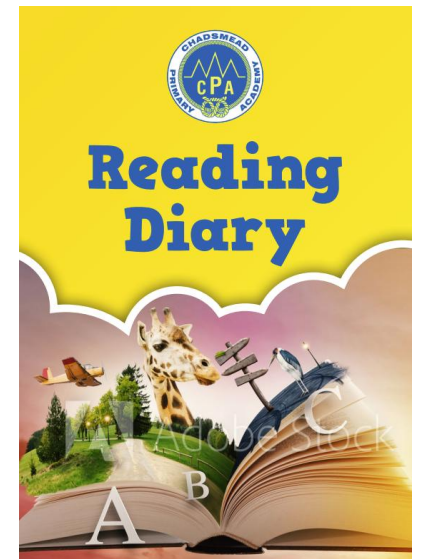
Book Bags



We encourage children to have 'book bags'. It helps them to be organised and grow independence.

PLEASE ENSURE BOOK BAGS COME INTO SCHOOL EVERY DAY.

- Homework book – returned Tuesdays



HOME PARTNERSHIP

Transition:

What we want your child to know when they enter Reception:

- ✓ Nursery Rhymes
- ✓ Putting on their own coat
- ✓ Using a knife and fork
- ✓ Recognising own name
- ✓ Writing own name
- ✓ Toilet trained
- ✓ Counting objects
- ✓ Counting to 10 by rote
- ✓ Interested in stories
- ✓ Hold and use scissors correctly- making snips in paper.
- ✓ Hold a conversation with an adult- can they talk about what they did during the summer.

Talk positively, with excitement, about the next year.

HOME PARTNERSHIP

Learning Journals

A Learning Journey is a collection of pieces of information that, when connected together, creates a picture of your child. In school we use it for:

- Assessing a child's development
- Providing a record of a child's time at Chadsmead
- To help us plan activities at the correct stage of development and what they need next.

We value sharing this with the children, to talk about their learning.

We encourage families at home to contribute to this book with WOW moments to share, they can be photographs, a note on our WOW sheets or other things of significance for your child.



_____ WOW moment is

Date: _____ Signed: _____

The learning will include:

- ❖ Photographs
- ❖ Your child creations
- ❖ Observations

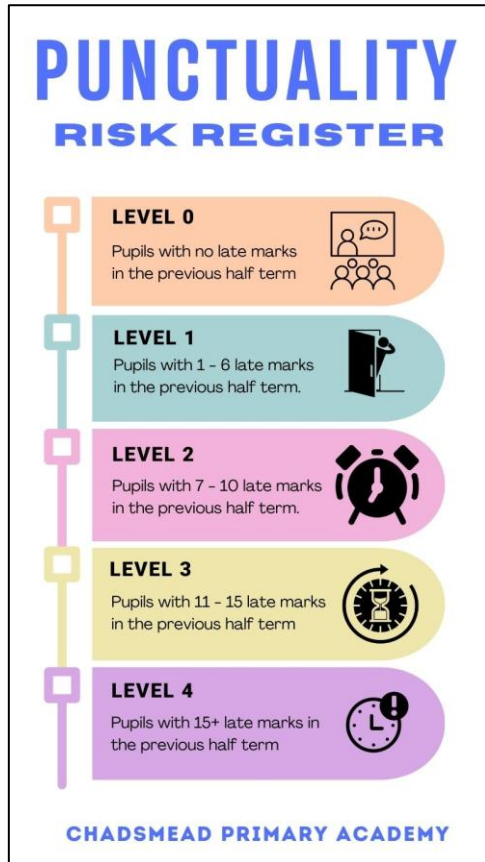
Transition: The first few weeks

We will find out what your children already know and can do and use this information to help us develop an individual learning programme for each child.

We spend lots of our time working and talking to the children about what they are learning. We may record some 'Wow' moments formally but largely we assess and move children on 'in the moment'.

You will be invited to discuss how your child has settled in and their progress so far at a Parents Evening – **7th & 8th October 2025**

Attendance



At Chadsmead we want every pupil to take full advantage of all the educational opportunities, both academic and social, which are available to them.

To do this children need to be at school, on time every day.

Absence Data Chart		
98%+	Outstanding Attendance	Risk Level 0
97 - 97.9%	Excellent Attendance	Risk Level 1
96 - 96.9%	Good Attendance	Risk Level 2
95 - 95.9%	Increasing Concern if further absences occur	Risk Level 2
92 - 94.9%	Significant Concern Attendance levels require improvement	Risk Level 3
Below 92%	Urgent Concern Attendance levels now critical	Risk Level 4
Below 90%	Urgent Concern Attendance levels now critical	Risk Level 4
85%	Urgent Concern Attendance levels now critical	Risk Level 4
80%	Urgent Concern Attendance levels now critical	Risk Level 4
50% or Below	Education is at critical risk	Risk Level 4
Chadsmead Primary Academy		

Restorative Relationships



At Chadsmead we work hard to establish and maintain positive relationships

We acknowledge children's feelings



What do I need to do?

Please ensure all paperwork is complete and returned to school, including your child's birth certificate.

If your child has medical conditions (allergies, asthma, something specific), you have included it in the paperwork and have then received a **Health Care Plan** to complete or have been invited into school to discuss the formulation of this plan.

What do I need to do?

Telephone Call

(Week Beginning 23rd June 2025)

Please ensure you have signed up for this 10-minute call before you leave today.

Stay & Play Sessions

Tuesday 1st July
2-3pm

Thursday 10th July
9.15-10.15am

What does my child need for school?

- **School Uniform**
- **PE Kit**
- **Forest Clothing**
- **SPARE Clothes –
pants/socks/trousers/skirts**
- **Book Bag**
- **Named Water Bottle**

Please ensure EVERYTHING
is labelled.

Starting School - September

The first day of the new academic year is:

First Day

You are welcome to come into class with our child and help them find their locker and then say goodbye.

Monday 8th September 2025

Drop off – 8:50am/Collection – 3:20pm

(all children start full days)

Acorn Classroom Door

Second Day

Children will come into class independently.

Stay In Touch

- **MyEd Messages**
- **Website**
- **School Newsletter**
- **Termly parent/carer meetings**
- **Workshops** (*stay & play, phonics, maths etc.*)



Questions?

**We will try our
best to answer.**

Stay & Play

**Lets go and explore
the Reception
classroom and
outside learning
area.**