

### *Which Word Class?*

*The young boy hastily ran down the street.*



*Which word is the verb?*

*Which word is the adverb?*

*Which word is the adjective?*

## Tuesday lesson

### *Learning to recognise features of a leaflet*

#### What is a leaflet?

A printed sheet of paper containing information or advertising



You are going to look at a range of leaflets.

What features do they have?

List them on a whiteboard.



What features have you seen?



-





Remember to:

- Read each feature label.
- Find the feature on the leaflet.
- Write word in the nearest box.
- Draw a label line between word and feature

## Activity

*Learning to recognise features of a leaflet*      T    TA    P


### Tudor Buildings

**What were Tudor Houses made of?**


Tudor Houses were made of :

- wooden frames.
- gaps filled with woven twigs (wattle)
- dung (daub) smeared over the top.

Tudor buildings were the first to have glass in the windows. You had to be wealthy as glass was very expensive. If families moved house they would take the glass with them.



Tudor houses were built between 1485– 1603 and they had a very distinctive black-and-white style appearance.



tudor Café Lichfield

There are still a large number of Tudor houses in the UK and some of them are more than 500 years old. We have many examples of these buildings in Lichfield.

Have you seen any?

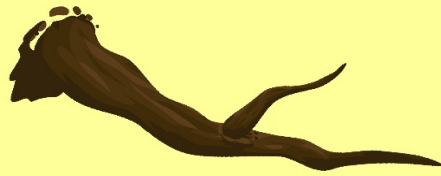
*photograph    subheading    boxes    illustration  
 title    bullet points    question    introduction*

Find the feature and write label in a box.  
Draw label line with a ruler.



## Which Word Class?

The enormous branch noisily crashed to the ground.



Which word is the verb?

Which word is the adverb?

Which word is the adjective?

Wednesday lesson

*Learning to recognise different types of sentences*





## Learning to recognise different types of sentences

These are all sentences.

They are punctuated correctly and contain a verb.

Tigers live in Asia.

Pandas eat bamboo.

Elephants are huge.

The tortoise has a hard shell.

Whales can hold their breath for a long time.



Tigers live in Asia.  
Pandas eat bamboo.  
Elephants are huge.  
The tortoise has a hard shell.  
Whales can hold their breath for a long time.



What do these sentences do?  
They tell us something.  
They are called **STATEMENT SENTENCES**.  
They are punctuated with a full stop.

*These are all sentences.*

*They are punctuated correctly and contain a verb.*



*The cow jumped over the moon.*

*Why did the cow jump over the moon?*

*How did the cow jump over the moon?*

*Did the cow jump over the moon?*

*Can a cow jump over the moon?*



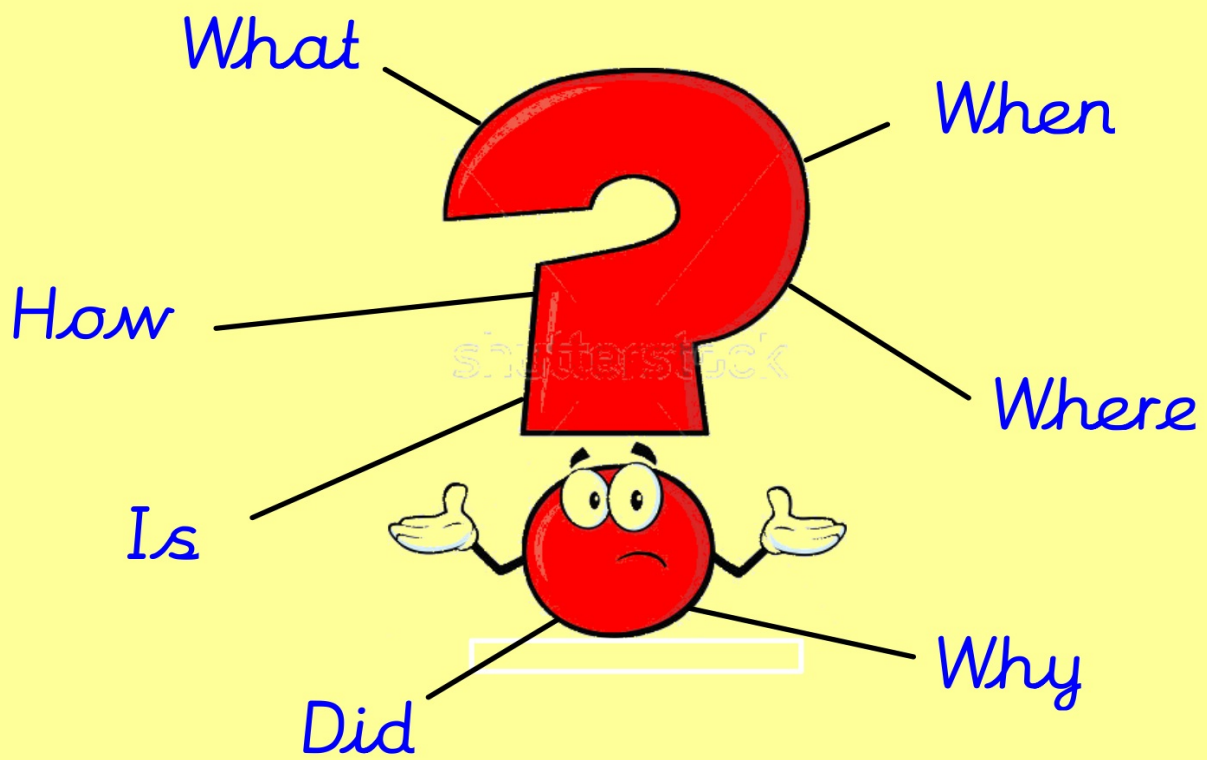
Why did the cow jump over the moon?  
How did the cow jump over the moon?  
Did the cow jump over the moon?  
Can a cow jump over the moon?

What do these sentences do?

They ask us something.

They are called **QUESTION SENTENCES**.

They are punctuated with a question mark (?).





Remember to:



- Read the sentence carefully.
- Look at the punctuation mark.
- If it has a full stop (.) - this is a statement  
If it has a question mark (?) - this is a question
- Stick or write under the correct heading.
- Write your own questions about a statement

*Activity:*

*Sort the sentences into STATEMENTS  
or  
QUESTIONS*

*Write some questions about a statement.*

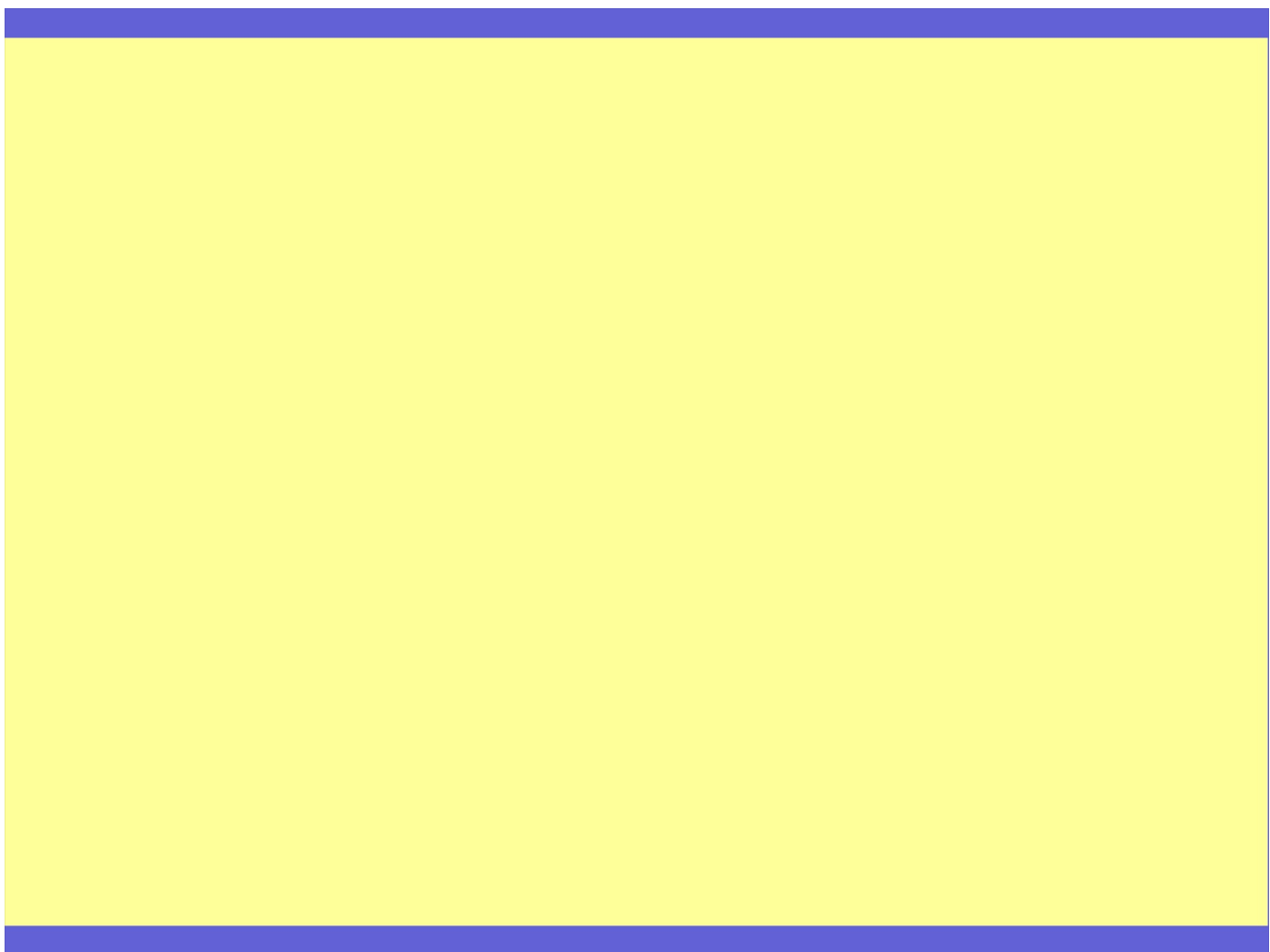


## *Learning to recognise different types of sentences*

### Statements

- 
- 
- 
- 

### Questions



## Which Word Class?

Suddenly, the tiny boat sank under the water.



Which word is the verb?

Which word is the adverb?

Which word is the adjective?



## Thursday lesson

### Learning to organise information on a leaflet



## Learning to organise information on a leaflet

What comes first?

How do you start writing?

What sub headings are used?

What type of sentence is one of these?

What information goes under this?

What comes at the end?

What else included?


### Tudor Buildings

**What were Tudor Houses made of?**


Tudor Houses were made of :

- wooden frames.
- gaps filled with woven twigs (wattle)
- dung (daub) smeared over the top.

Tudor buildings were the first to have glass in the windows. You had to be wealthy as glass was very expensive. If families moved house they would take the glass with them.



Tudor houses were built between 1485 – 1603 and they had a very distinctive black-and-white style appearance.



Tudor Café Lichfield

**Tudor Buildings Today**

There are still a large number of Tudor houses in the UK and some of them are more than 500 years old. We have many examples of these buildings in Lichfield.

Have you seen any?

Remember to:



- Read the sentence carefully.
- Look at the different features of a leaflet
- Stick/write the information under the correct feature.
- Check.

Title

Tudor Buildings

Introduction

Tudor houses were built between  
1485-1603.

What were Tudor Houses made of?

Tudor Buildings Today

What else is included?

Friday lesson

## Learning to write an imitate of a leaflet





What features must we include?

- 
- 
- 
- 
- 
- 
- 
-

*Learning to write an imitate of a leaflet*

Remember to:

- Use a title
- Write an introductory sentence
- Use sub headings.
- Use statement and question sentences
- Use bullet points for a list.
- Draw an illustration.



Activity:

Write an imitate leaflet 'Tudor Buildings'  
using:

Title

Introductory sentence

Sub headings

Statements

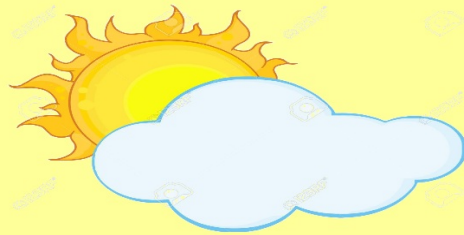
Questions

Bullet points

Closing question.

### Which Word Class?

Silently, the scorching sun disappeared  
behind a cloud.



Which word is the verb?

Which word is the adverb?

Which word is the adjective?

Friday 31st January

*Learning to create and use a checklist*





*What features make a good leaflet?*

## Learning to create and use a checklist

### Check list


| <u>Checklist for a leaflet</u>   | <u>You</u> | <u>Friend</u> |
|--|------------|---------------|
|  | /          | /             |
| Title  |            |               |
| Introductory sentence  |            |               |
| Sub heading 1<br>Question sentence<br>Statement sentences<br>Bullet points |            |               |
| Sub heading 2<br>Statement sentences<br>Question sentence                  |            |               |
| Picture  |            |               |
| Neat, cursive handwriting  |            |               |
| Punctuation<br>Caps <u>    </u> ?<br>bullet points                         |            |               |





Remember to:



- Look at the check list.
- Read you work and match features to the check list - tick if included
- Ask a friend to check your writing - they tick your check list
- Add  to show your work has been checked by a friend

Activity:

Complete writing the imitate leaflet.

Read and tick features using the checklist.

Ask a friend to read and check your work and tick the features on the checklist.

In blue pen, draw  to show your work has been checked by a friend.

