



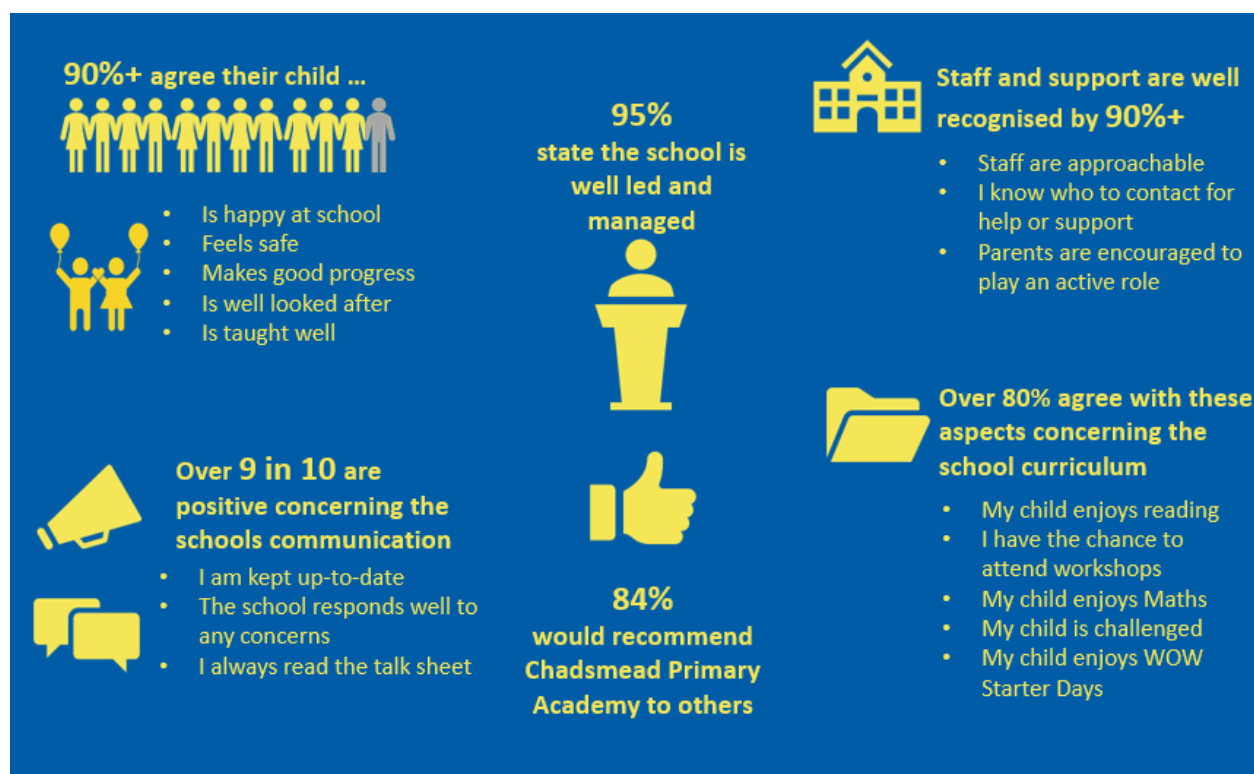
October 2019

Dear Parents and Carers

Now that the new school term is well and truly underway, I would like to thank everyone who took part in the parent/carers survey at the end of last academic year.

The survey has now been collated and you can see the results on the school website, it is located under the 'Parent and Families' tab. It was really great to gain such a large response from families and an insight into your opinions and thoughts about our school, which we have begun to take on board for this academic year.

#### Survey Overview:



There were many positive comments about school shared by parents and lots of great suggestions as to what we can improve on and make clearer for yourselves and children. Not all suggestions from the survey can be instantly addressed but we aim over time to spotlight each area in the school newsletter and share how we are addressing each of the areas covered by the survey.

**Friday Acre, Lichfield, Staffordshire, WS13 7HJ**  
**T: 01543 421850 E: [admin1@chadsmead.staffs.sch.uk](mailto:admin1@chadsmead.staffs.sch.uk)**





Alongside your own views, children's views in school are also being taken on board through the school's suggestions boxes and school council, where children can post or raise suggestions they have about our school. Already this term some great ideas have been shared and this has helped us consider which part of school life to focus on first.

We have decided to look at home learning as our first area. We have identified that there are many different opinions about what homework should and shouldn't be like and we are beginning to address the points raised. Specific information to follow.

We hope you find this information useful and will take a look at the survey results on our website.

Yours sincerely

A handwritten signature in black ink that reads 'Grainger'.

Mrs Grainger  
Headteacher