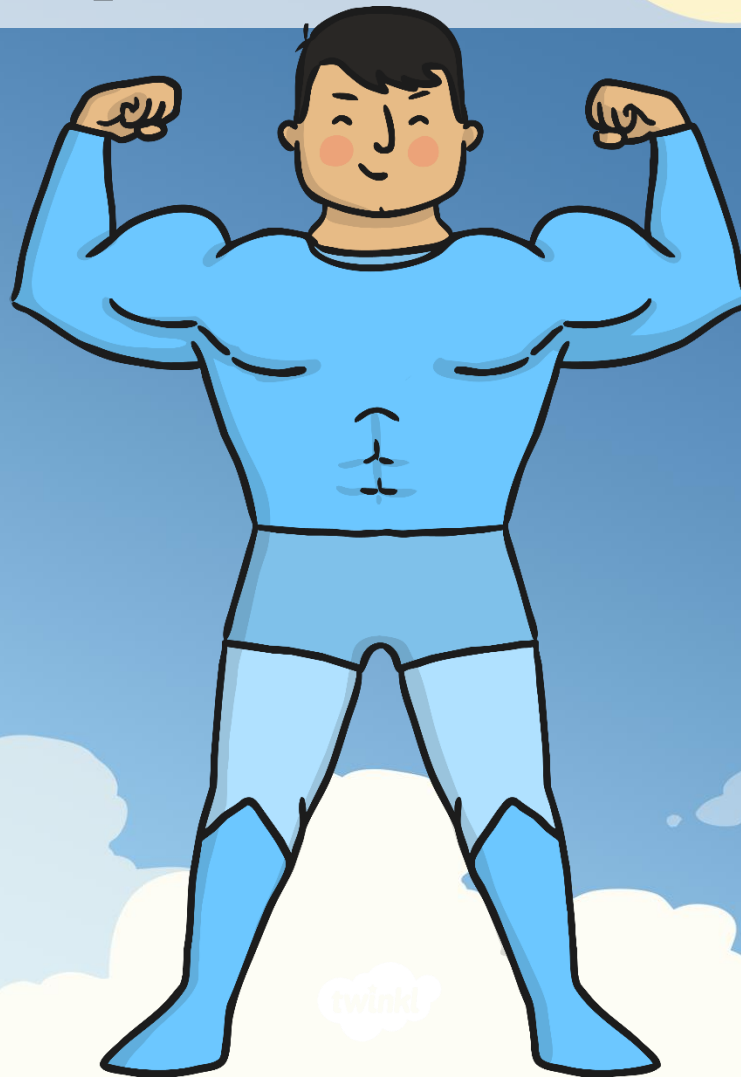
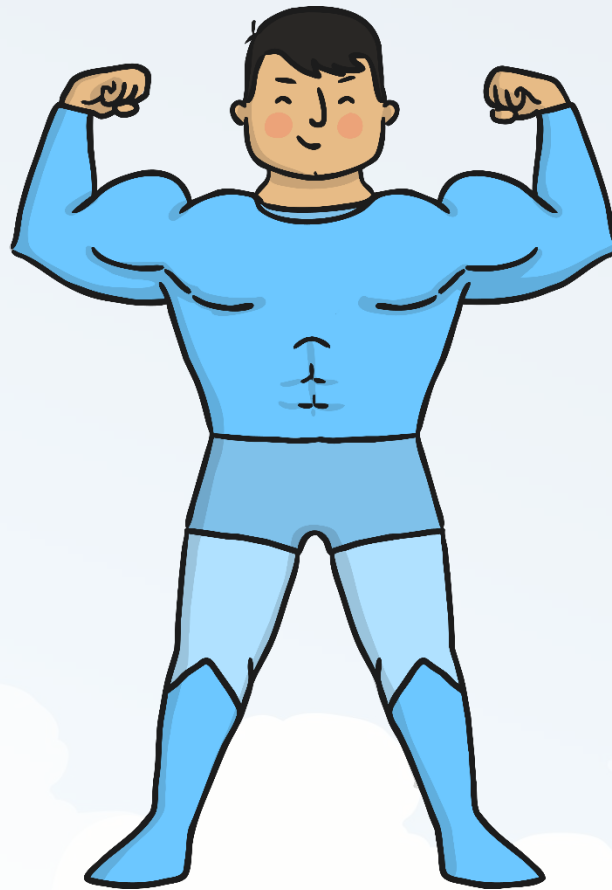


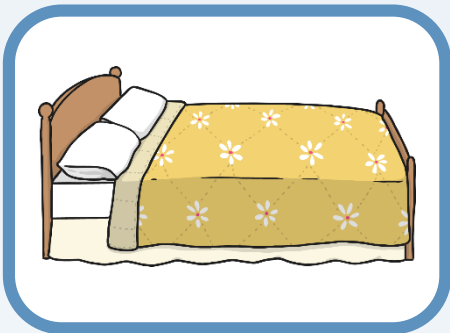
Compound Words



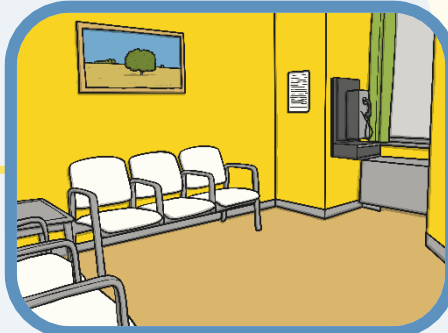
Meet Captain Compound. He is in charge of some very special words.



Look at these pictures. What can you see?



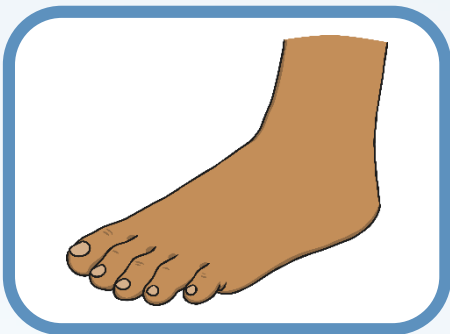
bed



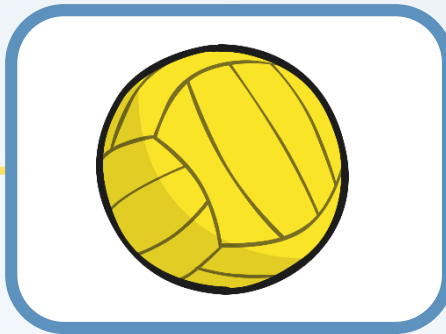
room



bedroom



foot



ball



football

A compound word is made of two separate words. The two words are joined together to make a new word.

Can you read these compound words?



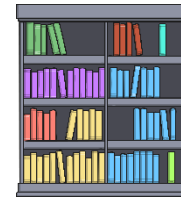
eyebrow



bathroom

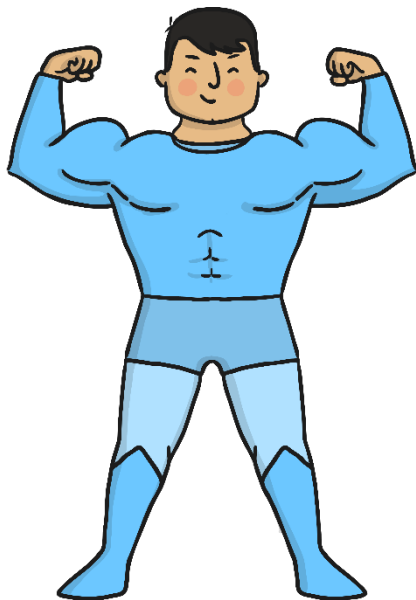


raindrop



bookcase

Can you match the
compound words to the
correct picture on the
Compound Words and
Pictures Matching
Activity
Sheets



Task 1



Compound Words and Pictures Matching

I can read compound words by splitting them into two shorter words.



1. Match each picture to its compound word. Remember, you can split the compound word up into its two words to help you. The first one has been done for you.

a) airbag
air bag

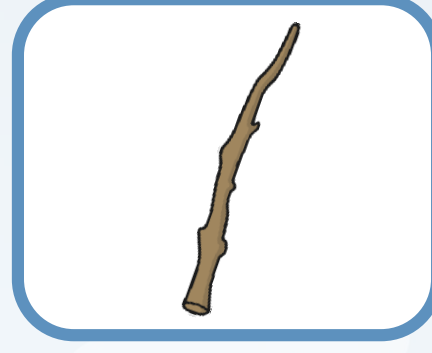
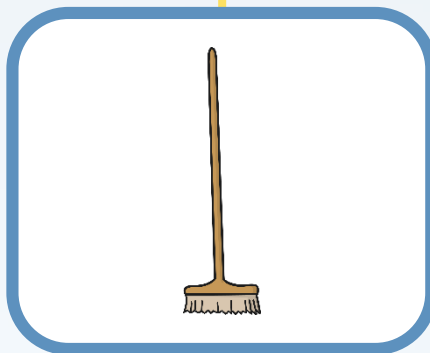
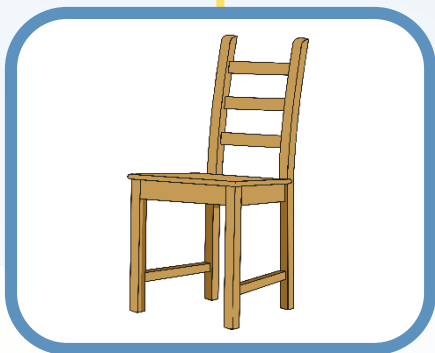
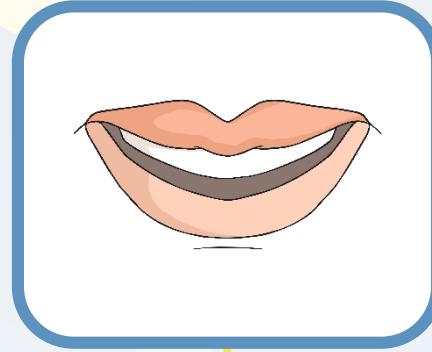
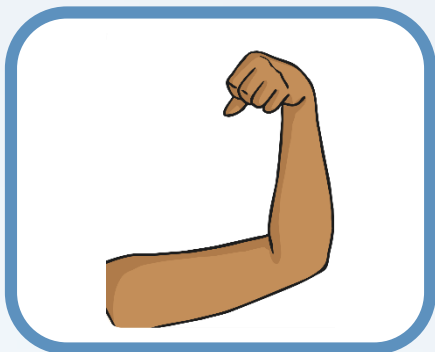
b) raindrop

c) waterfall

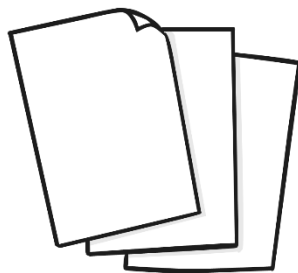
d) keyhole



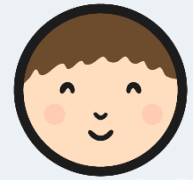
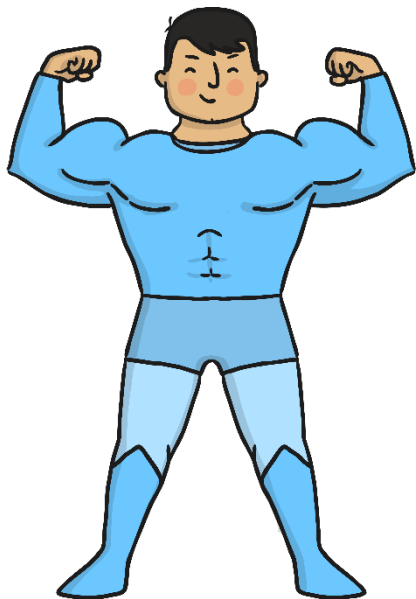
What do you think these compound words might be? Talk to your partner and write your answers on your whiteboard.



What do you think these compound words might be? Talk to your partner and write your answers on your whiteboard.



Work on your own to complete the **What's the Compound Word? Activity Sheet**. Can you work out the compound words from the sets of pictures? Write the words on the line next to the pictures.



★

d)

e)

★

Whats the Compound Word?

I can write compound words by splitting them into two shorter words.

1. Look at the pictures. Each pair of pictures is representing a compound word. Can you work out what the compound words are? The first one has been done for you.

| Word Bank | | | |
|-----------|---------|-----------|-----------|
| bathroom | snowman | firewoman | butterfly |

a)

hair

+

brush

=

hairbrush

b)

+

=

c)

+

=

twinkl planit

twinkl planit

What's the Compound Word?

twinkl.co.uk